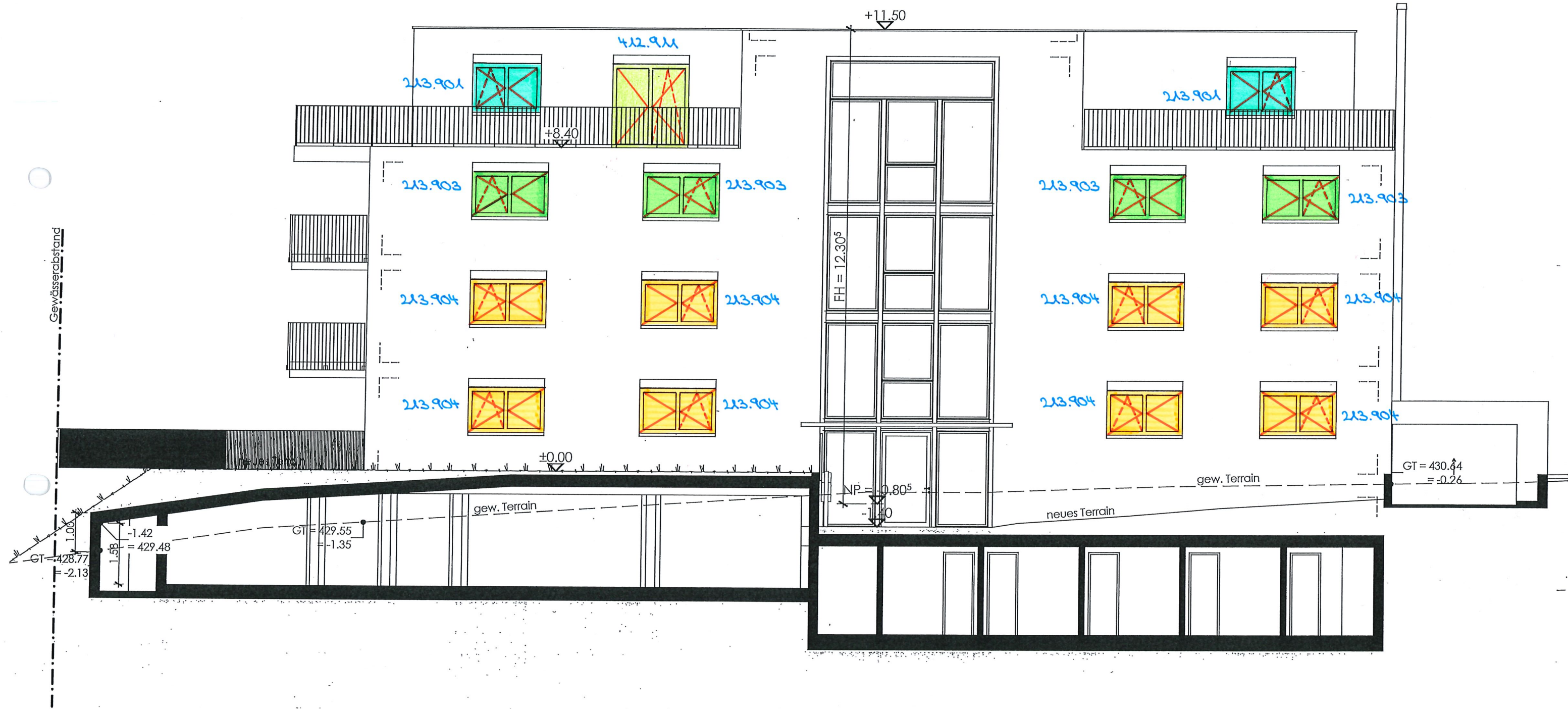


1726 MFH KLEINWIESSTRASSE
8862 SCHÜBELBACH SZ

AUSSCHREIBUNG
BKP 221.2
FENSTER AUS KUNSTSTOFF



NORDFASADE

POSITIONSPLÄNE

1. The first part of the paper discusses the importance of the research and the objectives of the study.

2. The second part of the paper discusses the methodology used in the study.

3. The third part of the paper discusses the results of the study.

4. The fourth part of the paper discusses the conclusions of the study.

5. The fifth part of the paper discusses the implications of the study.

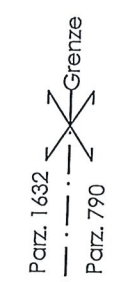
6. The sixth part of the paper discusses the limitations of the study.

7. The seventh part of the paper discusses the future research.

8. The eighth part of the paper discusses the acknowledgments.

9. The ninth part of the paper discusses the references.

10. The tenth part of the paper discusses the appendices.



WESTFASSADE

02.04.2022



SÜDFASSADE

02.04.2022

+11.20 = 442.10 m.ü.M.
 Dach
 2.80
 +8.40 = 439.30 m.ü.M.
 P03 Attikageschoss
 2.80
 +5.60 = 436.50 m.ü.M.
 P02 2.Obergeschoss
 2.80
 +2.80 = 433.70 m.ü.M.
 P01 1.Obergeschoss
 2.80
 ±0.00 = 430.90 m.ü.M.
 P00 Erdgeschoss
 3.00
 -3.00 = 427.90 m.ü.M.
 M01 Untergeschoss



Ostfassade

02.04.2022