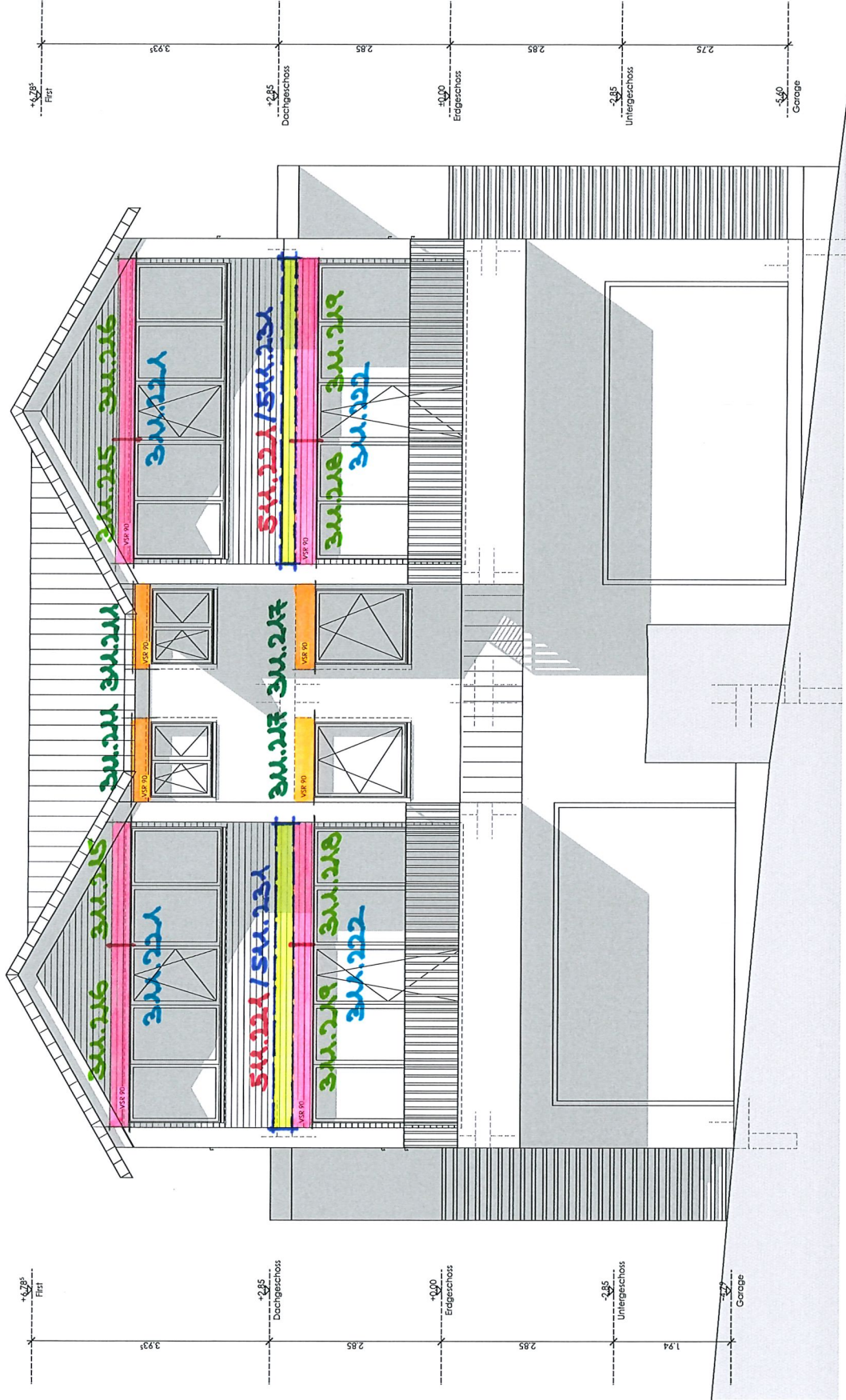
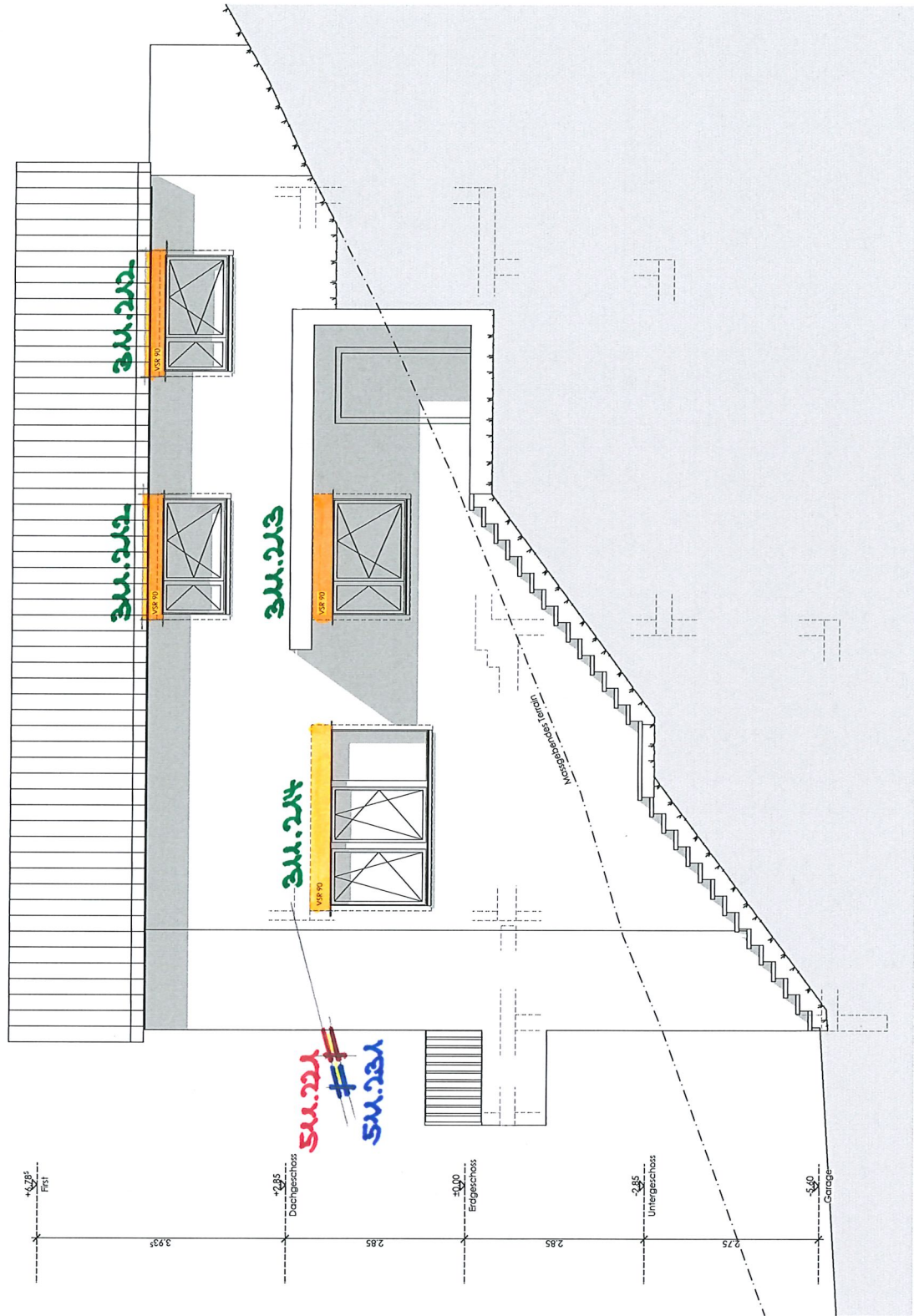


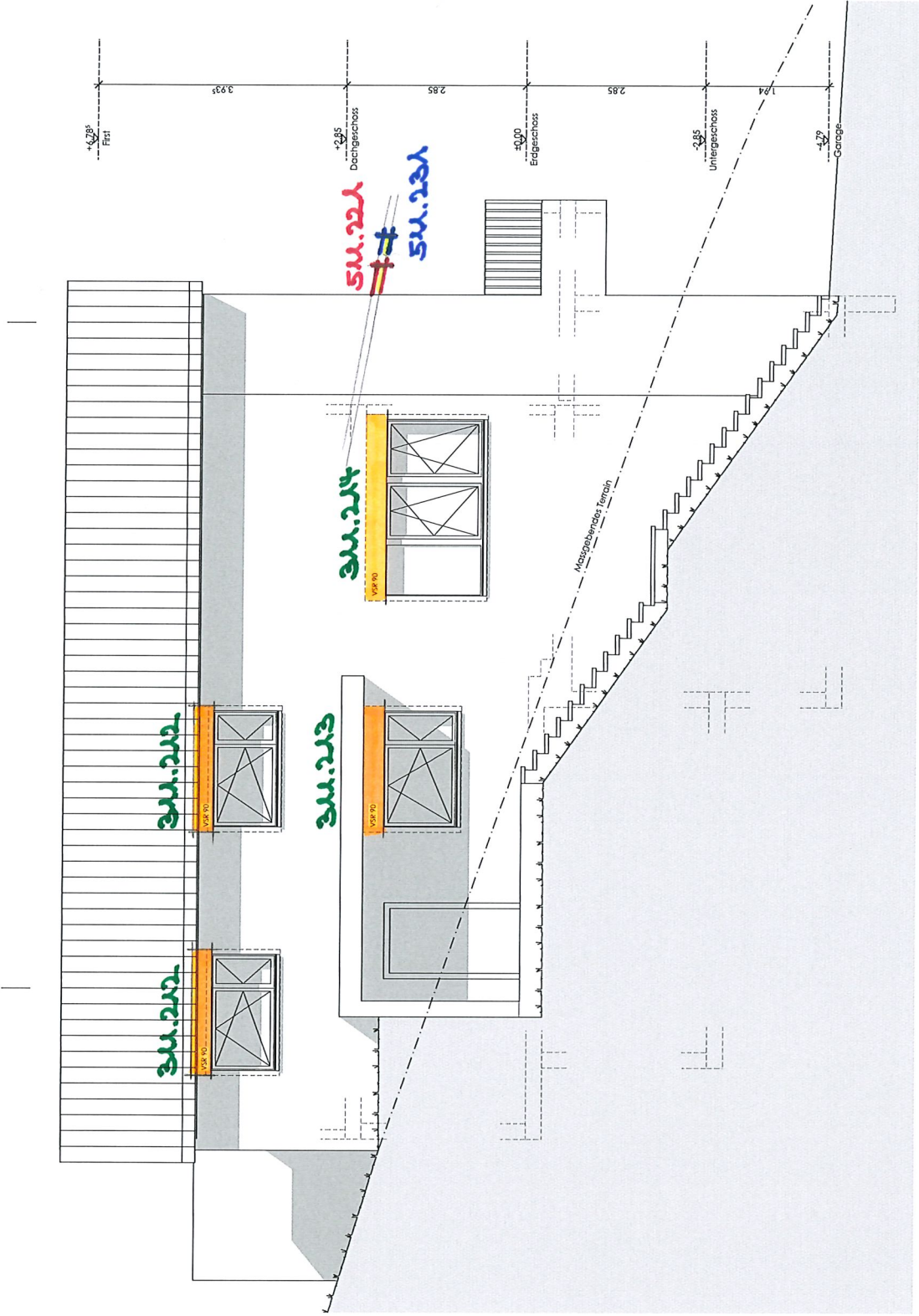
# Südfassade



# Ostfassade



# Westfassade





The floor plan shows a building with the following rooms and features:

- Basement (Basement):**
  - Basement (Basement):** Includes a staircase (Treppenhaus) and a technical room (M01.03 Technik).
  - Basement (Basement):** Includes a garage (M01.02 Garage) and a cellar (M01.04 Keller).
- Ground Floor (OG):**
  - Entrance (E00.02):** The main entrance to the building.
  - Living/Dining Room (Wohnen/Essen):** A large open-plan area with a fireplace.
  - Bedroom 1 (P01.04):** A bedroom with a bay window.
  - Bedroom 2 (P01.05):** A bedroom with a bay window.
  - Living Room (P01.03):** A living room with a fireplace.
- Basement (UG):**
  - Basement (UG):** Includes a garage (M01.02 Garage) and a cellar (M01.04 Keller).

Technical specifications and dimensions are provided for various parts of the building:

- Basement (Basement):**
  - Basement (Basement):** Includes a staircase (Treppenhaus) and a technical room (M01.03 Technik).
  - Basement (Basement):** Includes a garage (M01.02 Garage) and a cellar (M01.04 Keller).
- Ground Floor (OG):**
  - Entrance (E00.02):** The main entrance to the building.
  - Living/Dining Room (Wohnen/Essen):** A large open-plan area with a fireplace.
  - Bedroom 1 (P01.04):** A bedroom with a bay window.
  - Bedroom 2 (P01.05):** A bedroom with a bay window.
  - Living Room (P01.03):** A living room with a fireplace.
- Basement (UG):**
  - Basement (UG):** Includes a garage (M01.02 Garage) and a cellar (M01.04 Keller).

Dimensions and elevations are indicated throughout the plan, such as room widths (e.g., 3.69m, 2.85m), heights (e.g., 2.49m, 2.60m), and floor levels (e.g., +0.00, -0.38m).

<b>Steldachaufbau</b>	
Muldenschiebel-legal	50mm
Ziegellattung	30mm
Hinterfüllung	10mm
Wachsfaserplatte Isolar	35mm
mit Abdecklage Dörken Delta Went	20mm
Sparrn mit Wärmedämmung	30mm
Insulationsraum	20mm
Massivholzdäcker	20mm

**Bodenaufbau OG**  
Parkett  
Unterlagsboden  
PE-Folie  
Wärmedämmung  
Trittschalldämmung  
Stahlbetondecke

Bodenaufbau EG	
Platten	15mm
Unterlagsboden	55mm
PE-Folie	
Wärmedämmung	20mm
Trittschalldämmung	20mm
Stahlbetondecke	250mm

Bodenaufbau UG	
Platten	15mm
Unterlagsboden	55mm
PE-Folie	
Wärmedämmung	20mm
Trittschalldämmung	20mm
Straßendecke	250mm
Wärmedämmung XPS	180mm
Magerbeton	50mm

Material	Stärke	Einheit
Platten	20	mm
Spalt	50	mm
Trennlages	20	mm
Abdichtung 2-Lagig	20	mm
Wärmedämmung	20	mm
Dampfbremse	20	mm
Stahlbetondecke	20	mm

**Bodenaufbau Garage**

Zementüberzug	30-75mm
Stahlbetondecke	250mm
Magerbeton	50mm

<b>Bodenaufbau Vorplatz</b>	
Verbundsteinplatten	60mm
Split	30mm
Kies	400mm